



Econowood Venetian

MATERIALS & SIZES

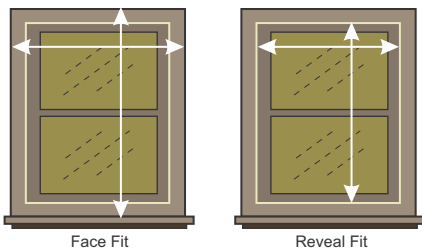
Econowood (PVC), available in 50mm and 63mm slats

STANDARD OPERATING SYSTEM

Cord operation including cord lock

STANDARD DEDUCTIONS (Factory makes deductions unless otherwise specified)

- Width deduction 10mm & drop 0mm (closed position) for reveal fit
- Drop deduction 10mm (if using hold down bracket) for reveal fit
- Width and drop deductions 0mm for face fit
- Head-rail deductions 5mm (outside / face fit)



LIMITATIONS

- Maximum width is 2710mm
- Maximum drop is 3200mm
- Minimum width is 250mm
- Minimum drop is 200mm
- Single blind size should not exceed 6m²
- Over 6m² will be made as 2-ON-1 head-rail blind, with max width of 3010mm and max drop of 3200mm

HEAD-RAIL TYPES

- 53mm x 58mm High Profile Steel Head-rail
- 2-ON-1 head-rail

ACORN & BREAKAWAY CORD JOINER

Material : PVC



- Metal acorn in Antique Brass and Gold (Surcharge applies)



MINIMUM RECESS DEPTH (REVEAL)

- Fully recessed 65mm no return required
- Semi recessed - as requested. Note: minimum return is 20mm.

FACE FIT

- Order standard returns are 77mm
- Add for architrave depth if returning to the wall

COLOURS

Our standard colours are listed below

Blind colour	Ladder, Tilt & Pull cord colour	Head-rail & bracket colour	Tassel, Breakaway tassel & Button colour
Island White Classic White	White	White	Snow White
Drift White	Alabaster	Stone White	Snow White
Seashell Parchment	Alabaster	Stone White	Cameo

OPERATION

Control option, quantity of ladders and pull cords

Blind width (mm)		# of ladders	# of pull cords
250-300	Tilt only - Center	2	2
301-400	Opposite side or tilt only	2	2
401-565	LR, RL, LL, RR	2	2
566-875	LR, RL, LL, RR	3	2
876-940	LR, RL, LL, RR	3	3
941-1474	LR, RL, LL, RR	5	3
1475-1625	LR, RL, LL, RR	6	4
1626-2099	LR, RL, LL, RR	7	4
2100-2710	LR, RL, LL, RR	10	4

CORD LENGTHS - (unless otherwise specified)

- Standard Factory calculation is 2/3rds of the drop of the blind in the down position.
- Child Safety Breakaway is located approx. 100mm from the cordlock in the down position
- Tilt cord minimum length is 550 mm

VALANCES

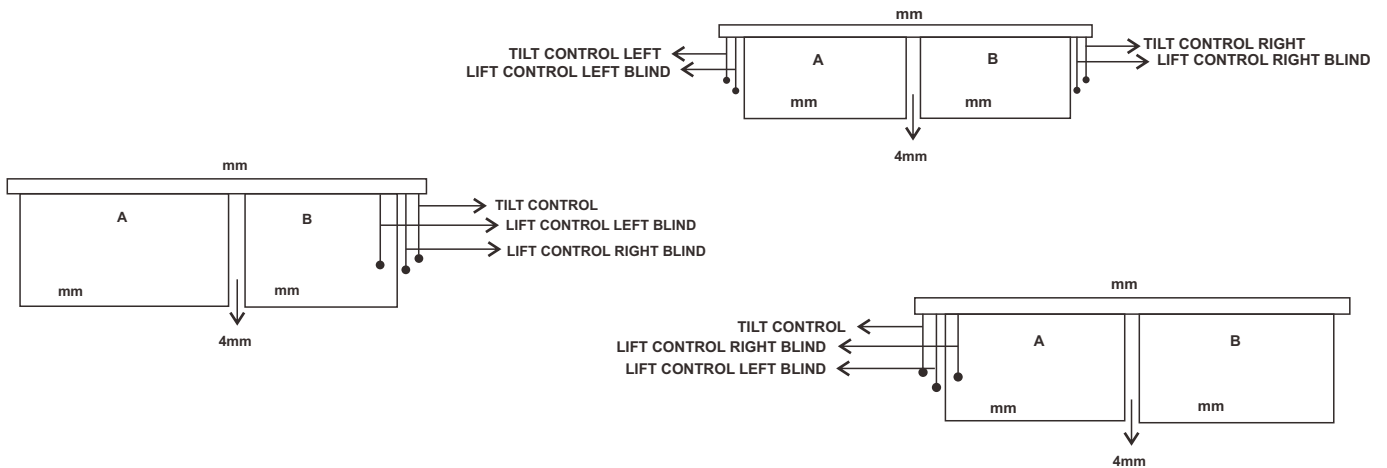
- 76mm Harbour Bridge, maximum width 2710mm in one piece.
- For 2-On-1 head-rail over 2710 the valance will be supplied with a mitre joint.
A plastic clip is supplied to attach to the head-rail
- Valance size based on head-rail size after deductions
 - Reveal Fit extra 9mm
 - Face Fit extra 20mm
 Reveal Fit - no return ends
 Face Fit - returns to be nominated (eg right only, left only, left & right)



2-On-1 head-rail Mitre Joint

2-ON-1 BLIND OPERATION

For the number of ladders and pull cords, please refer to above chart.
 For tilt and lift options, no cords can be placed in the center of the blinds.
 Cords can be both left, both right, left/right and right/left.



Our Econwood material meets the following requirements :

ASTM F963-17, Section 4.3.5.2(2) (b)

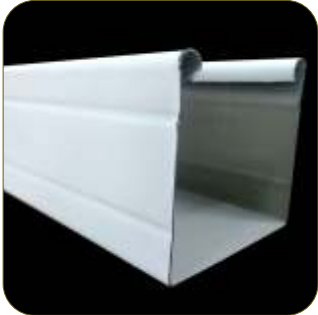
Test method : ASTM International Standard ASTM F963-17, section 8.3.1 and Annex A7

Total Element(s)	As	Ba	Cd	Cr	Hg	Pb	Sb	Se
Maximum Allowable Limit (mg/kg)	25	1000	75	60	60	90	60	500

-	Unit	Result
Test Item(s)	-	1001
Parameter	-	-
Total Arsenic (As)	mg/kg	ND
Total Barium (Ba)	mg/kg	ND
Total Cadmium (Cd)	mg/kg	ND
Total Chromium (Cr)	mg/kg	ND
Total Mercury (Hg)	mg/kg	ND
Total Lead (Pb)	mg/kg	ND
Total Antimony (Sb)	mg/kg	ND
Total Selenium (Se)	mg/kg	ND
Conclusion		PASS

Note / Key :

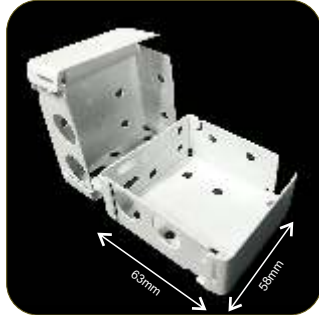
ND = Not detected ">" = Greater than NR = Not requested
 % = percent mg/kg = milligram(s) per kilogram ppm = part(s) per million
 Detection Limit (mg/kg) :
 For Nonmetallic material(s) - As : 16 ; Ba : 10 ; Cd : 10 ; Cr : 10 ; Hg : 10 ; Sb : 30 ; Se : 50
 For Metallic material(s) - As : 10 ; Ba : 50 ; Cd : 10 ; Cr : 10 ; Hg : 10 ; Pb : 10 ; Sb : 20 ; Se : 50



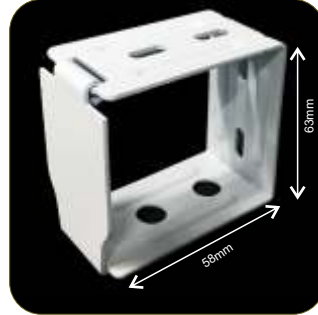
53 x 58mm High Profile steel Head-rail



Bottom-rail



Box Bracket



Support Bracket for Head-rail



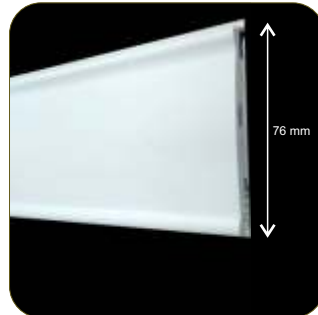
Cord Lock



Ladder Cord



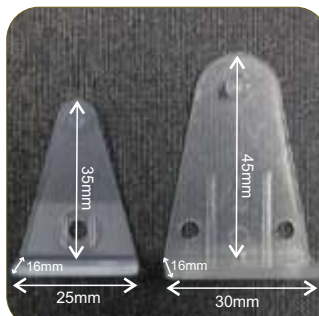
Valance Clip



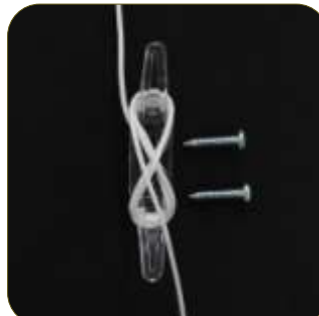
76mm Harbour Bridge Valance



Valance Return end Clip



Hold-down Clip for 50 and 63mm Venetians



Tie-off Cleat (child safety requirement)

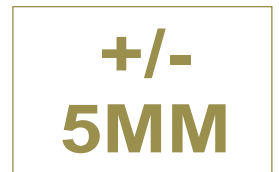
HOW TO CALCULATE A DROP MEASUREMENT

Our standard drop measurement is achieved when the blind is in the closed position with the bottom-rail tilted. When the blind is in the open position, the lowest point of the bottom-rail will sit around 10mm higher than when the blind is in the closed position. If using hold down clips, the bottom-rail will sit around 10mm closed position and then open position around 20mm (50mm blind) & 30mm (63mm blind).



STANDARD TOLERANCE

Please note that our standard tolerance for blind width and blind drop is +/- 5mm. If the blind is made within our tolerance range, no claim will be accepted.



WARRANTY INFORMATION

Component : 3 years
Colour : 2 years

COLOUR VARIATION

Colour variation may occur between samples and production due to dye lot tolerances. Whilst manufacturers make every effort to match dye lots, the customer acknowledges that colour shades may vary from the samples shown.



LARGER SIZES

As a general rule, Econowood blinds over 3m² are heavy and can be difficult to lift. Depending on the application, it is advised to use two or more blinds on one head-rail. When lifting larger blinds, the operator should guide the blind by holding the base-rail as they are lifting it up.

Due to memory retention, blinds should not be left in the up position for any extended length of time. If the blind warps as a result of this no claim will be accepted.

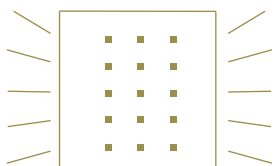


LIGHT BLEED

All blinds allow light to pass through around the sides of the blind. In addition, there will be small pin holes of light in each slat where the ladder cords pass through.

Consider using face fit as an option rather than reveal fit to reduce light bleed at the sides.

This is not a blackout blind.



CUTOUTS

A cutout is a blind with an area removed from it to avoid an existing obstruction.

Please provide detailed measurements of the area to be removed.

Maximum Depth Of Cut Out is 100mm per side.

Surcharges apply, please refer to "Surcharge & Option" list.

