

**3** YEAR  
WARRANTY

*Basswood Venetian*

# SPECIFICATION

## MATERIALS & SIZES

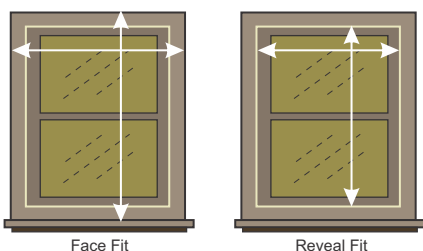
- Basswood, available in 50mm and 63mm slats

## STANDARD OPERATING SYSTEM

Cord operation including cord lock

## STANDARD DEDUCTIONS (Factory makes deductions unless otherwise specified)

- Width deduction 10mm & drop 0mm (closed position) for reveal fit
- Drop deduction 10mm (if using hold-down clip) for reveal fit
- Width and drop deductions 0mm for face fit
- Head-rail deduction 5mm (outside / face fit)



## LIMITATIONS

- Maximum width is 2410mm
- Maximum drop is 3200mm
- Minimum width is 300mm
- Minimum drop is 200mm
- Single blind size should not exceed 6m<sup>2</sup>
- Over 6m<sup>2</sup> will be made as 2-ON-1 head-rail, max width of 3010mm and max drop of 3200mm

## HEAD-RAIL TYPES

- 53mm x 58mm High Profile Steel Head-rail
- 2-ON-1 head-rail

## ACORN & BREAKAWAY CORD JOINER

Material : PVC



- Metal acorn in Antique Brass and Gold (Surcharge applies)



## MINIMUM RECESS DEPTH (REVEAL)

- Fully recessed 65mm no returns required
- Semi recessed - as requested. Note: min returns is 20mm

## FACE FIT

- Standard returns are 70mm
- Add extra for architrave depth if returning to the wall

## COLOURS

Our standard colour combinations are listed below

| Blind colour               | Ladder, Tilt & Pull cord colour | Head-rail & bracket colour | Tassel, Breakaway tassel & Button colour |
|----------------------------|---------------------------------|----------------------------|--|
| Oregon Chestnut            | Teak                            | Teak                       | Teak                                     |
| Pristine White Super White | White                           | White                      | White                                    |
| Maraschino Cherry          | Mahogany                        | Mahogany                   | Mahogany                                 |

## OPERATION

Standard pull cord length is 2/3 of drop

| Blind width (mm) | Lift & Tilt control option | # of ladders | # of pull cords |
|------------------|----------------------------|--------------|-----------------|
| 301-400          | Opposite side or tilt only | 2            | 2               |
| 401-500          | LR, RL, LL, RR             | 2            | 2               |
| 501-800          | LR, RL, LL, RR             | 2            | 2               |
| 801-999          | LR, RL, LL, RR             | 3            | 2               |
| 1000-1370        | LR, RL, LL, RR             | 3            | 2               |
| 1371-2410        | LR, RL, LL, RR             | 5            | 3               |

## CORD LENGTHS - (unless otherwise specified)

- Standard Factory calculation is 2/3rds of the drop of the blind in the down position.
- Child Safety Breakaway is located approx. 100mm from the cordlock in the down position.
- Tilt cord minimum length is 550 mm

# SPECIFICATION

## VALANCE

75mm Flat Valance

For 2-ON-1 head-rail over 2410mm, the valance will have a miter joint.

Male to male velcro is supplied to attach the valance to the head-rail.

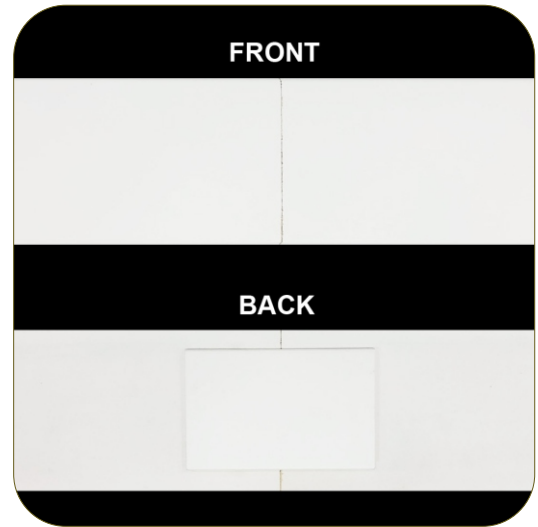
- Valance size based on head-rail size after deductions
- Standard valance return length is 70mm
  - Reveal Fit extra 9mm
  - Face Fit extra 20mm

Reveal Fit - no return ends  
Face Fit - returns to be nominated  
(eg right only, left only, left & right)

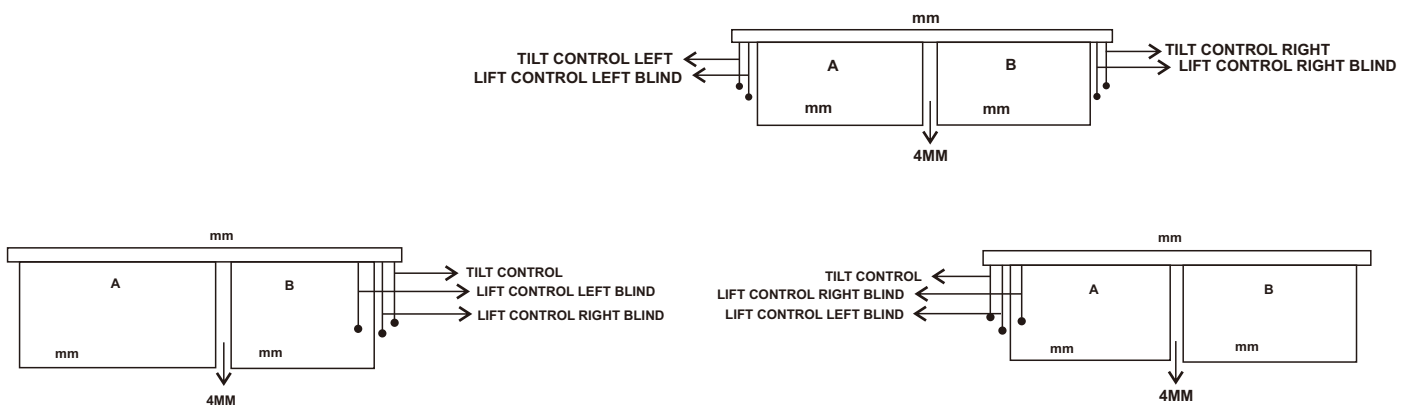
## 2-ON-1 BLIND OPERATION

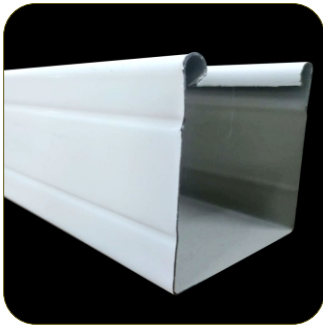
For the number of ladders and pull cords, please refer to above chart.

For tilt and lift option, cords cannot be placed in the center of the blinds. Cords can be both left, both right, left/right and right/left.



2-On-1 head-rail Miter Joint

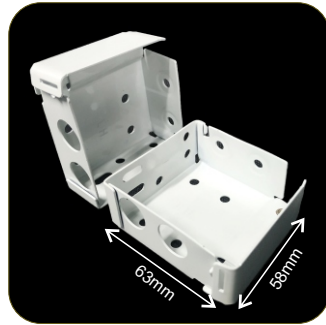




53 x 58mm High Profile steel Head-rail



Male to male on Head-rail & Velcro Basswood Valance



Box Bracket



Mid Support Bracket for Metal Head-rail



Cord Lock



Ladder Cord on 50 & 63mm Blind



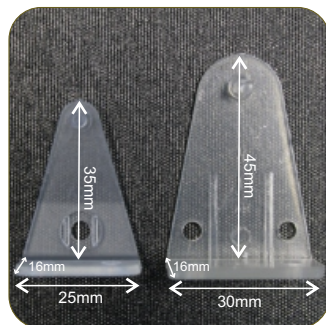
Basswood Bottom-rail



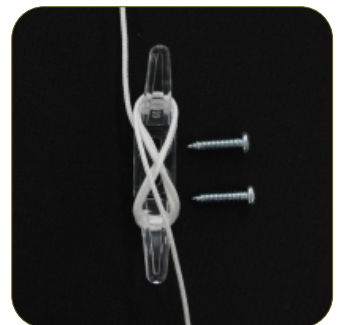
75mm Basswood Flat Valance



Valance Return Joiner for Basswood Return Ends



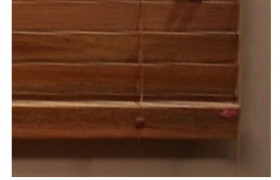
Hold-down Clip for 50 and 63mm Venetians



Tie-off Cleat (child safety requirement)

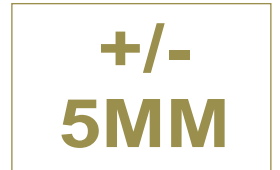
## HOW TO CALCULATE A DROP MEASUREMENT

Our standard drop measurement is achieved when the blind is in the closed position with the bottom-rail tilted. When the blind is in the open position, the lowest point of the bottom-rail will sit around 10mm higher than when the blind is in the closed position. If using hold-down clips, the bottom-rail will sit around 10mm above the reveal in the closed position and in the open position around 20mm above (50mm slat) & 30mm above (63mm slat)



## STANDARD TOLERANCE

Please note that our standard tolerance for blind width and blind drop is +/- 5mm. If the blind is made within our tolerance range, no claim will be accepted.



## WARRANTY INFORMATION

Component : 3 years  
Colour : 2 years

## COLOUR VARIATION

Due to the use of natural materials, colour variation will sometimes occur with Timber Venetians.



## CLEANING / REGULAR CARE

Use a soft duster or non-coloured cleaning cloth.  
Wipe gently with a damp cloth to remove dust or marks from the blind surface using a chemical-free or mild detergent.  
DO NOT rub or use any abrasive substances or solvent.

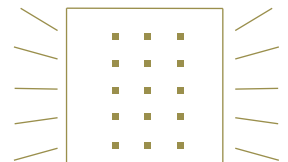
## LARGER SIZES

As a general rule, timber blinds over 3m<sup>2</sup> are heavy and can be difficult to lift. Depending on the application, it is advised to use two or more blinds on one head-rail. When lifting larger blinds, the operator should guide the blind by holding the base-rail as they are lifting it up. Due to memory retention, blinds should not be left in the up position for any extended length of time. If the blind warps as a result of this no claim will be accepted.



## LIGHT BLEED

All blinds allow light to pass through around the sides of the blind. In addition, there will be small pin holes of light in each slat where the ladder cords pass through. Consider using face fit as an option rather than reveal fit to reduce light bleed at the sides. This is not a blackout blind.



## CUTOUTS

A cutout is a blind with an area removed from it to avoid an existing obstruction. (e.g. partially tiled reveal). Please provide detailed measurements of the area to be removed. Maximum Depth Of Cut Out is 100mm per side. Surcharges apply, please refer to "Surcharge & Option" list.

