

Altus 40 RTS

PRODUCT SPECIFICATIONS



The precise and simple solution for the interior window covering market

PRODUCT MAIN FUNCTIONALITIES



Compatible with Solar protection functions



Remote limit setting



Round head for reduced dimensions.



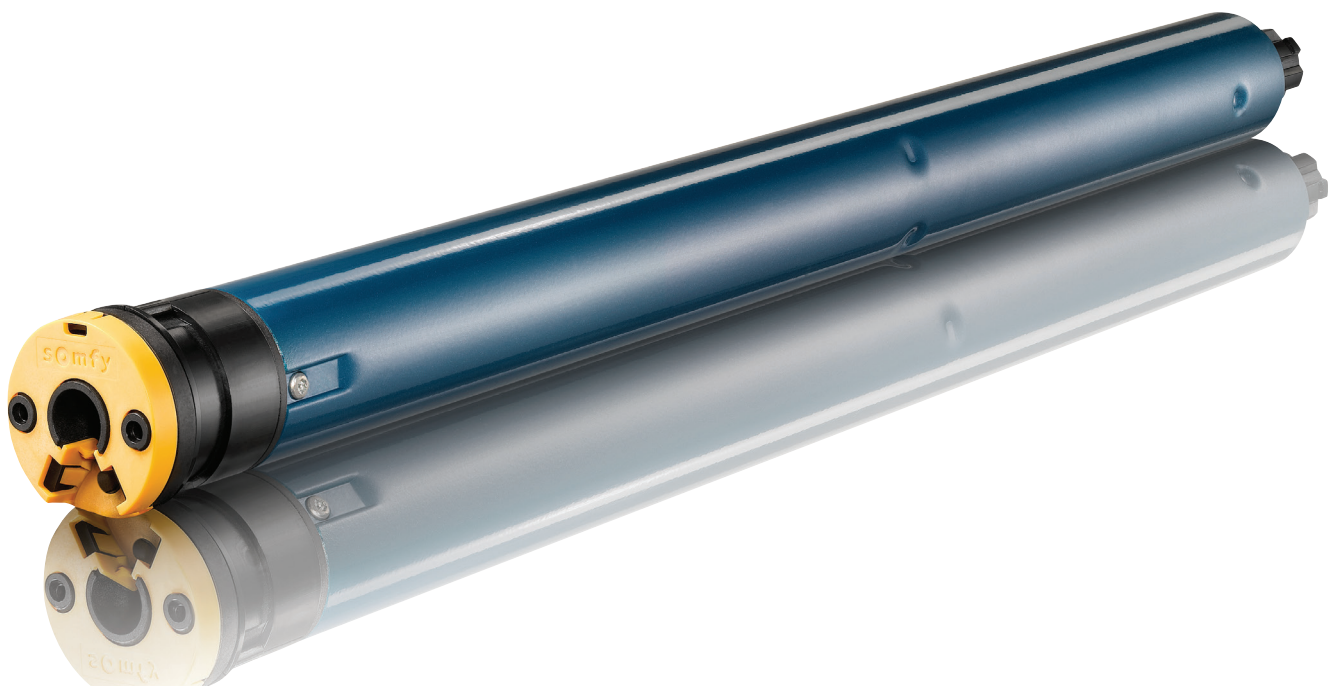
“my” favourite
In one click move the blind to your favourite position.

Somfy +

Quiet operation and all the benefits of RTS technology.

RECOMMENDED TO SET WITH:

Universal test lead
(ref. 9 015 971)



Altus 40 RTS

PRODUCT SPECIFICATIONS



BENEFITS FOR PROFESSIONALS

Easy Integration

- Suitable for tubes diameter 40 mm or more (internal diameter)
- Available with inline connector for ease of programming
- Integrated antenna

Setting from a distance

- Up and down end limits set by remote control

BENEFITS FOR END USERS

Simple, effortless control

- Quiet operation
- Move your blinds effortlessly and remotely thanks to the radio control
- Move your blinds to your favourite "my" position in one click

Access to RTS product range for more benefits

- Solar protection functions compatibility

COMPATIBLE END-PRODUCTS



Roller blinds



Roman blinds



Projection screens

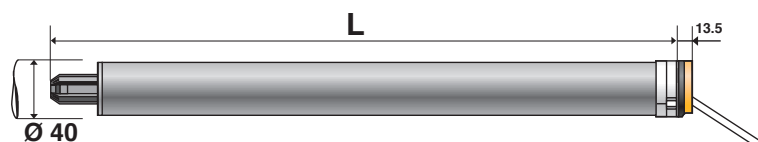
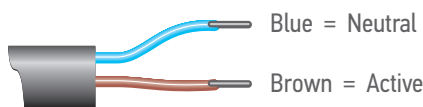
TECHNICAL DATA

Thermal Time	4 minutes
Supply	AC
Index protection rating	IP 44 (indoor use only)
Limit switch unit	Electronic
Limit switch capacity	Unlimited
Temperature working range	-10°C to +40°C
Electric insulation	Class II
Capacity of memory	12 different transmitters plus 3 wireless sensors
Coding	Rolling code with 16 million possibilities

PERFORMANCES

	3/30	13/10
Nominal Voltage	230V / 50Hz	
Torque (Nm)	3	13
Speed (rpm)	30	10
Rated Current (A)	0.42	0.52
End-limit unit versions available	RTS	RTS
Radio Frequency	433, 42 MHz	
Item Number	1020124	1024171
Item Number with inline connector	1020172	1024234

230 V



DIMENSIONS

L (mm)	497	497
--------	-----	-----