

**3** YEAR  
WARRANTY

*Fabric Pelmets*

### STANDARD SIZE

- Double Slimline Bracket - 200mm face
- Single Roller Bracket - 140mm face
- Available up to 300mm face - surcharge applies

### PELMET OPTIONS



With Timber Battens

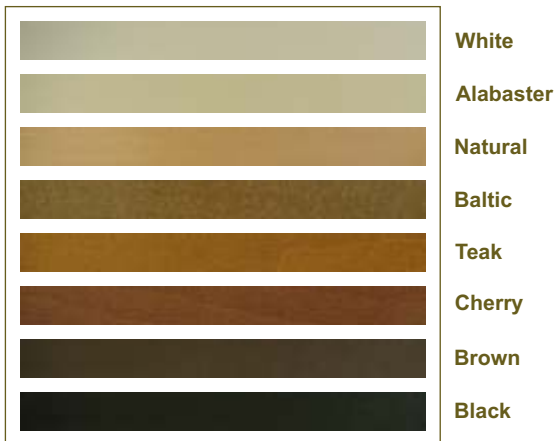


Without Battens

### PELMET FABRIC

- Only Blockout fabrics can be matched with Roller, Roman and Panel Glides
- Subject to fabric width

### TIMBER BATTEN COLOURS



### BATTEN PROFILE

8mm x 12.5mm Timber (Semicircle)



### PELMET RETURN

All pelmets are supplied with returns as standard inner depth/inside box measure (100 & 150mm) - return sizes must be specified

### MAXIMUM WIDTH

Maximum width is 2900mm subject to fabric width Over 299mm will be centre split with mitre & fabric join

### FEATURES

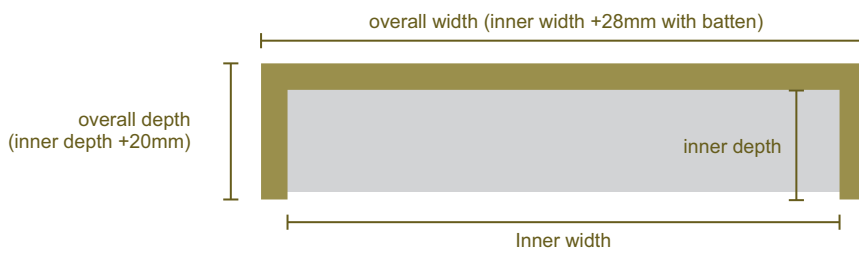
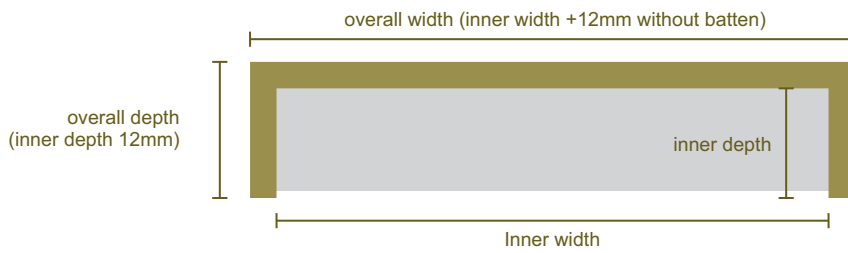
- The dust cover will minimize dust which reduces cleaning
- Pelmets cover the working components which creates a more elegant look

## ORDERING FABRIC PELMETS

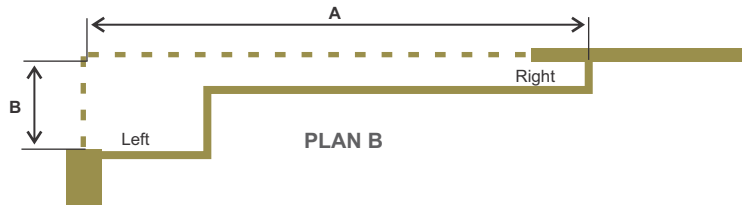
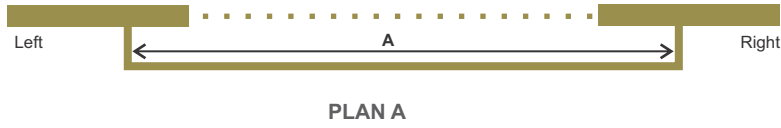
Please specify on the order :

- Pelmet style
- Inner width
- Inner depth
- Face drop
- Batten colours
- Return length (overall depth)
- Layout Plan

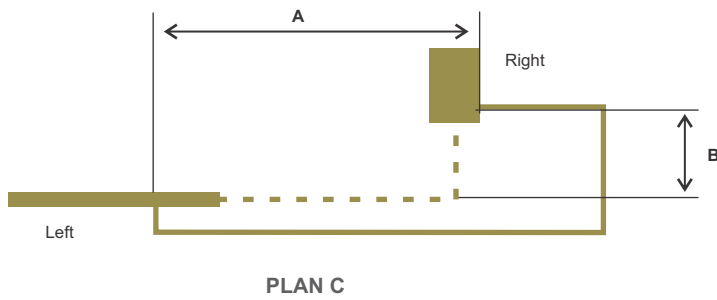
## PELMET MEASUREMENT



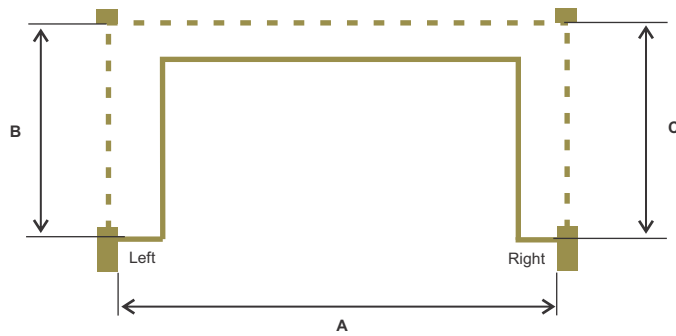
PELMET LAYOUTS



A = Corner to return  
B = Corner to return



A = Corner to return  
B = Corner to return



A = Wall to Wall  
B = Wall to returns (L)  
c = Wall to returns (R)





*Linea Valances*

## SIZES AVAILABLE :

- 100mm face
- 140mm face

## COLOURS

- Cotta (White)
- Mist (Off White)

## LIMITATION

- Maximum width is 2910mm (subject to max fabric width)
- Minimum width is 600mm

## STANDARD ALLOWANCES

- Factory takes all deductions
- Reveal fit  
Width deduction 2mm
- Face fit  
Width add 10mm

## FABRIC INSERT

Fabric insert is available if required

## FITTING

The Linea Valance can be clipped directly onto the Panel Glide Track. When you are fitting over a Roller or Roman Blind the pelmet will be fitted separately to the reveal or face

## VALANCE RETURN

Outside Mount will be supplied with mitred ends and returns  
The returns simply clip into the valance with L shaped return clips  
Inside Mount will have straight cut ends

- **Single roller**  
- Return Length is 120mm
- **Dual roller**  
- Double Bracket 38mm standard return is 145mm  
- Double Bracket 45mm standard return is 180mm (width over 2410mm)
- **Panel Glide - 3 track**  
- Return Length is 160mm
- **Panel Glide - 4 track**  
- Return Length is 160mm
- **Panel Glide - 5 track**  
- Return Length is 170mm
- **Vertical**  
- Return Length is 120mm  
Vertical with Extension Bracket

## MEASURING VALANCE

Linea Valances are generally ordered with the blinds they are to accompany.  
Unless specifically nominated we will make to fit with the blind - refer to deductions for standards.



