



*Alpha Motor*

**PRODUCT FEATURES**

This new version of our popular battery motor has a new ground-breaking coreless DC drive inside, that is much more efficient and much quieter than other battery motors.

The motor has internal lithium rechargeable batteries with enough storage for around 12 - 18 months of average use. It can be used on blinds up to 2910 mm x 3200 mm.

The fittings for these motors will allow it to be used with Acmeda tube sizes from 42 and 49mm in diameter. All of the charging intelligence is taken care of inside the motor, not by a 3rd party charger. This eliminates many of the issues experienced by other brands of DC motors.

The motor will indicate both when charging is required, and completed. It cannot be overcharged and it will not start to discharge when the batteries are full as other brands may do. The charger plugs directly into the motor head so there is no need for an unsightly charging cable.

**Specifications - 12V DC**

<b>Type</b>	<b>2/31</b>
Rated Torque (N.m)	2
Output Speed (rpm)	31
Nominal Voltage (V)	11,1
Running Time (Min)	∞
Protection Index (IP)	20
Maximum Turns (Turns)	∞
Weight kg	0,54
Length mm	507



**Navigator 1 Channel**  
Specifications

<b>Channels</b>	<b>1</b>
Frequency (Mhz)	433.92
Codes	Rolling
Magnetic Wall Mount	Yes



**Navigator 5 Channels**  
Specifications

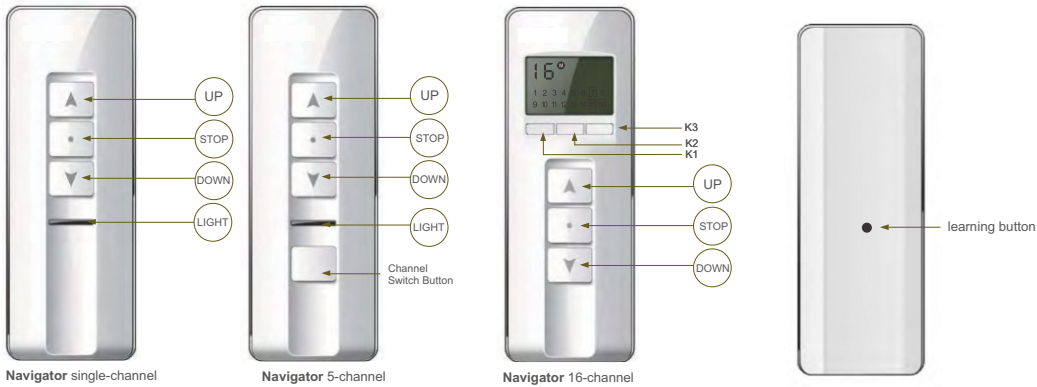
<b>Channels</b>	<b>5</b>
Frequency (Mhz)	433.92
Codes	Rolling
Magnetic Wall Mount	Yes



**Navigator 16 Channels**  
Specifications

<b>Channels</b>	<b>16</b>
Frequency (Mhz)	433.92
Codes	Rolling
Magnetic Wall Mount	Yes

## PRODUCT APPEARANCE



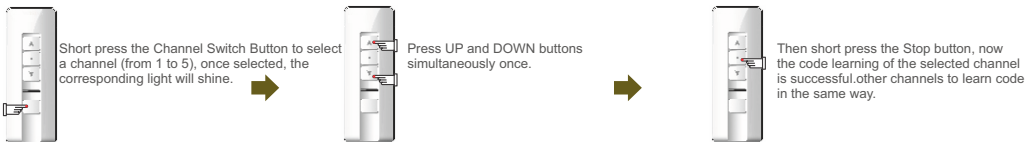
## TECHNIQUE DATA

- Power: 3V Model: CR2032
- Protection Index: Ip20
- Working Temperature: -10 C to +60 C (LCD emitter)
- Working Temperature: -20 C to +60 C (Non - LCD emitter)
- Currency:  $\leq 12\text{mA}$
- Code: Rolling Code
- Frequency: 433.92MHz

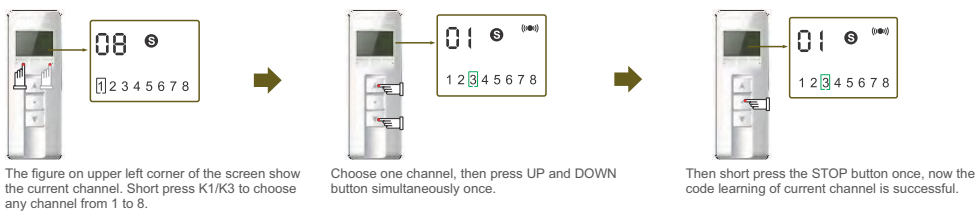
## CODE LEARNING

- Single-channel emitter  
Press Up and Down buttons simultaneously once, then short press Stop button once.

- Navigator 5-channel emitter



- LCD Multi-Channel (take 8-channel emitter as an example).



## Single Control

Press K1/K3 button to select a channel, then the corresponding motor can be controlled by the emitter through UP/STOP/DOWN button.

## Group Control (Navigator 5-channel emitter)

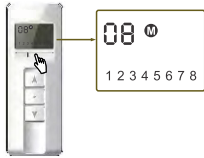
Short press the Channel Switch Button to select a channel (from 1 to 5), once selected, the corresponding light will shine.



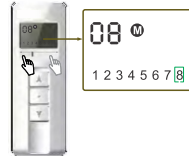
Note: If all of the five light are on, it means the emitter is in Group Control state.

## Group Control (LCD emitter)

Short press K2 button to chose group **M** or Single control **S**



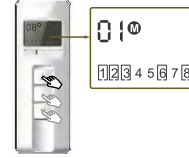
Long press K2 for 2S to enter Group Control mode, the current channel on the upper left corner of the screen will shine.



Short press K1/K3 to choose channels into your group, for example channel 8 as picture shows.



Short press K2 to confirm, same method for the other channels.

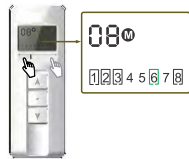


Press UP/STOP/DOWN button to exit the setting.

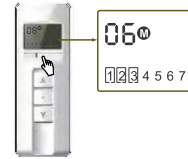
## Delete Group Control



Long press K2 for 2S to enter Group Control mode, the current channel on the upper left corner of the screen will shine.



Short press K1/K3 to choose channels into your group, for example channel 6 as picture shows.



Short press K2 to confirm, same method for the other channels.



Press UP/STOP/DOWN button to exit the setting.

Note: Wether in **M** or **S** mode, the current channel is always selected

## NOTE

- The emitter must enter into timing setting page if you want to set timing points (there is a timing clock on the upper left), otherwise, the setting is invalid.  
If there is no timing clock on the upper left, hold STOP button and press K2 within 10 seconds, then timing clock will be there.
- you'd better not press emitter's button too long. Each pressing is about 0.5s and the pressing interval is about 1S.
- The emitter will stop working if the battery is in low power. Please replace the battery in this case.